



eHealth

Connectivity for Remote Patient Monitoring

Remote Patient Monitoring (RPM) enables patients to monitor their chronic illness or disease from the safety and comfort of their own home, whilst providing healthcare professionals with an up to date report on their patients' health.

Data captured can be used to make informed decisions without the patient having to visit a hospital or clinic for more regular check-ups. Monitoring solutions all differ and require varying levels of bandwidth when transmitting data.

Cellular connectivity can provide Solution Providers and Device Manufacturers with an 'Always On' secure and reliable 4G solution for higher bandwidth or LTE Cat-1 BIS/LTE-M for battery operated or lower bandwidth applications.



Find out more... 



'Always-On' Connectivity

Network connectivity which is resilient to outages or poor signal coverage



Rapid Deployment

Devices should deploy and operate without any network surveys or customisation



Data Security

Security and privacy of patient identity and information



User Experience

Devices should work straight out of the box and be easy to use without the need or complexity of Bluetooth or WiFi



Lower Cost of Ownership

Long battery life, smaller form factors and remote configurability

Why consider cellular connectivity for your Remote Patient Monitoring solutions

➤ 'Always-On' Connectivity

eSIM and 4G LTE technologies provide connectivity options which are more resilient than WiFi. They also provide the flexibility for Device Manufactures and Solution Providers to create single product SKUs which can be deployed or re-deployed quickly into new markets. This reduces manufacturing costs and simplifies logistics.

➤ Rapid Deployment

Coverage issues are mitigated by roaming SIMs which allows devices to find and connect to the 'strongest signal'. eSIM allows network providers to be updated over-the-air should commercial or network performance issues arise.

➤ Data Security

SIM-based authentication and secure private networks (Private APN and VPN) provide protection from internet security risks such as WiFi hubs and ensure secure routing to approved data centres.

➤ Improve on BTLE, WiFi user experience

With 4G LTE there is no need to pair devices with other equipment. Devices can operate independently with minimal set-up.

➤ Lower Cost of Ownership

4G supports high performance applications like video. LTE Cat-1 BIS and LTE-M provide single antenna options and battery efficiency which can help keep hardware costs and device dimensions smaller.

➤ 2G/3G sunseting

LTE Cat-1 BIS and LTE-M are good alternatives to 2G and 3G which will be turned off during the next few years.

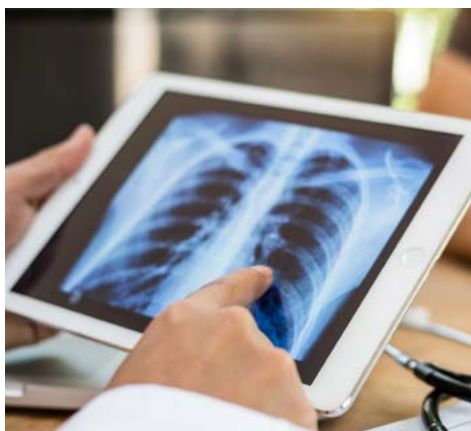


RPM applications **connected** with **cellular connectivity**



Heart/Cardiac monitoring devices

Pre-programmed devices such as tablets, and pulse oximeters to record patient vitals use cellular connectivity to deliver data securely to care providers for ongoing monitoring.



Chronic Obstructive Pulmonary Disease (COPD) monitors

Connected devices enables patients to alert medical staff via an online platform when assistance is needed. Through RMS, early intervention can reduce the need for hospital visits.



Continuous Positive Airway Pressure (CPAP) monitors

Data collected from patients with sleep apnoea can help patients identify ways to improve their sleep and alert medical professionals in the instance of respiratory emergencies.



Diabetes and Glucose wearables

Sends data to continuously monitor blood glucose levels using cellular connectivity for easier and seamless diabetes management.



Your RPM applications will be **secure**

Keeping patient data secure is critical. Risk of data breach or hacked information can have huge and damaging implications for the patient and the healthcare provider.

Locking down and encrypting data through private network overlays will help to mitigate any risk of data loss. By working with a connectivity provider with ISO27001 certification, Solution Providers and Device Manufacturers will have the reassurance that any data generated will be managed and processed securely.



Talk to one of our solution experts about which cellular solutions would be right for your deployment... ➤

Why Wireless Logic for Remote Patient Monitoring Connectivity?



Resilient connectivity

Un-steered roaming for secure 'Always-On' 4G, LTE Cat-1 BIS and LTE-M connectivity.



Secure two-way data

Private network infrastructure with private APNs and VPN solutions.



Total Control

Any network, any number of deployments, all centrally managed through the **SIMPPro** platform.



IoT Expertise

Tailored solutions for your application's specific connectivity needs.



Security Standards

ISO27001 accredited.

Contact us today...

to talk to an expert or get a quote

Call: **0330 056 3300** Email: **hello@wirelesslogic.com** Web: **wirelesslogic.com**
