



Device Management

Device Management from Wireless Logic enables solution providers, OEMs and global corporations to monitor and remotely manage IoT devices and hardware in real time.

Customers who deploy IoT devices, routers, gateways, single board computer and industrial PC based devices can benefit from real time monitoring of device data such as location, temperature, signal strength and other device parameters.

Device Management also enables users to manage devices including configuration changes, firmware updates, diagnostics and data collection all through one platform. This removes the need to toggle between different systems from different vendors which removes administrative overhead and cost.

Devices and data can be protected by advanced network security measures which can detect and manage eSIM theft or other rogue device behaviour.





The challenges of managing IoT devices

Managing diverse devices and protocols

Handling large-scale deployments with different types of devices and protocols increases complexity, requiring standardisation efforts and platform integration.

Avoiding costly investment in R&D

Customising devices for management (protocols, testing, certification) is resource-intensive, making it essential to adopt flexible platforms that reduce in-house development.

Full lifecycle management

Beyond data collection, managing provisioning, diagnostics, repairs, and firmware updates is critical, especially at scale, requiring automation and robust systems.

Ensuring security at scale

IoT security is challenging, with constrained devices vulnerable to attacks, necessitating automated updates, continuous monitoring, and tailored security protocols.

Interoperability between vendors

Devices from different vendors often lack standardisation, complicating management across ecosystems. Middleware or open standards can assist but add complexity.



Device Management enables users to manage IoT devices including configuration changes, firmware updates, diagnostics and data collection and monitoring all through one platform.



Saves cost and time

- Correlate device and eSIM information*
- Remote management
- Diagnose network or device issues remotely

Device Management Benefits'



Enhanced user experience

- Real time information
- Access eSIM and device management interfaces with single sign-on*
- User friendly graphical interface



Scalability

- Vendor agnostic platform
- Https access of remote endpoints
- Rapid deployment

Considerations for using Device Management

➤ Keep Track of your assets

Leverage platform automation to locate and track devices using network location services or GPS. Manual tracking is cumbersome and error prone.

➤ One solution for all device vendors

Monitor and manage your entire device estate using a single platform, regardless of hardware vendor.

➤ Over The Air Device Management

Perform remote configuration changes or firmware over the air (FOTA) updates via a secure web management platform.

➤ Rapid Deployment

Deploy with confidence using an un-steered SIM or eSIM to maximise your first-time connection rate or to support fast re-deployment to new sites.

➤ Access to real time hardware information

Receive real time information from devices such as signal strength, operating environment data and firmware version information.

➤ Primary and Secondary Connectivity Options

Customised data tariffs for primary and secondary connections based on single or multi-network eSIMs.

➤ Fraud Detection

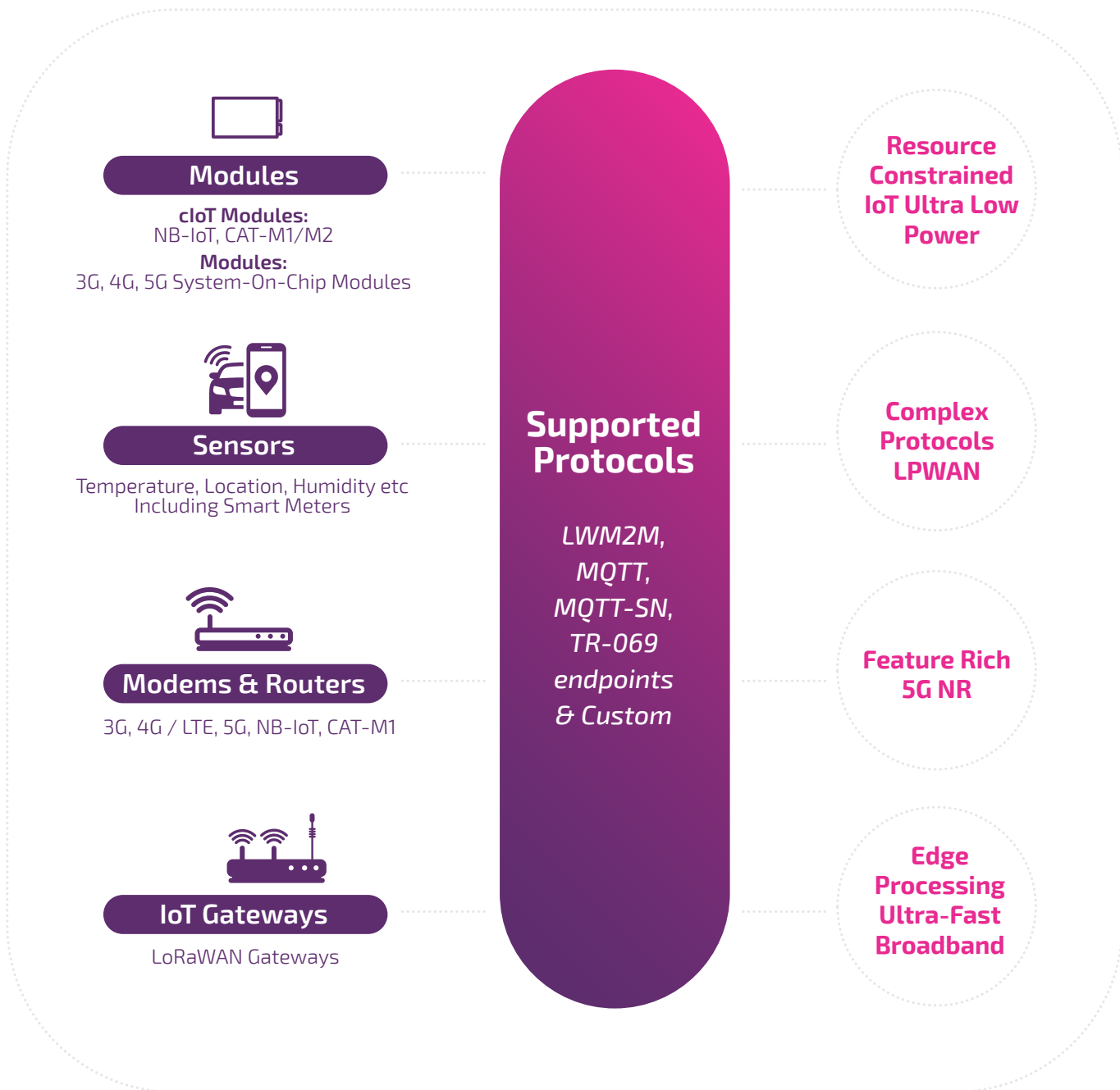
Protect your devices and data using advanced network security measures to detect and manage eSIM theft or other rogue device behaviour.



* Feature available in future version releases



Supported IoT Devices





Device Management solution

Applications benefitting from Device Management...

Applications that need the **rapid deployment benefits of LTE** as a primary or secondary failover solution include:



ANPR / CCTV



EV Charging



Asset Tracking



Energy/Utilities



Retail



Device Management

SIM Management



Talk to our IoT solution experts to select the right technology for you... >

Why Wireless Logic for Device Management?



Global Coverage

Our 'built-for-IoT' network services and partnerships provide global coverage and local access into 45 major networks



Security

Multi-layered security including APN and VPN options and advanced network security measures which can detect and manage eSIM theft or other rogue device behaviour.



Expert Support

20+ years' experience to help you select the right solution and keep total cost of ownership low.



Managed Services

SIMPro is our 5th generation connectivity management platform which integrates connectivity, device and security management.



Rapid Deployment

Fast and expert deployment, solution designs, customer service and tech support.

Contact us today...

to talk to an expert or get a quote

Call: 0330 056 3300 Email: hello@wirelesslogic.com Web: wirelesslogic.com/devicepro
